



Visit and Download Full Version Certificationtime Exam Dumps  
<https://certificationtime.com/updated/200-601-exam-dumps-pdf/>

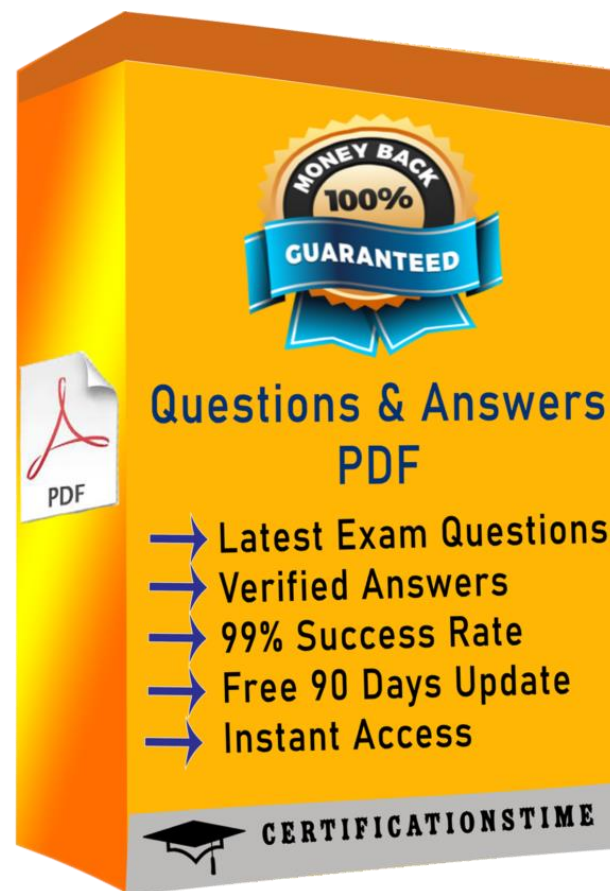


**Cisco**

## **Exam Questions 200-601**

IMINS2 Managing Industrial Networking for Manufacturing with Cisco  
Technologies

**<https://certificationtime.com/>**





#### QUESTION 1

Which option allows an EtherNet/IP I/O device to be safely installed where it is subject to water immersion?

- A. The device is rated IP20 and the power wiring is installed securely to the terminal block.
- B. The device is rated IP67 and a power cordset is used.
- C. The device is rated IP67 and immersed to 10 m.
- D. The device is rated IP20 and immersed to 10 m.

Answer: B

#### QUESTION 2

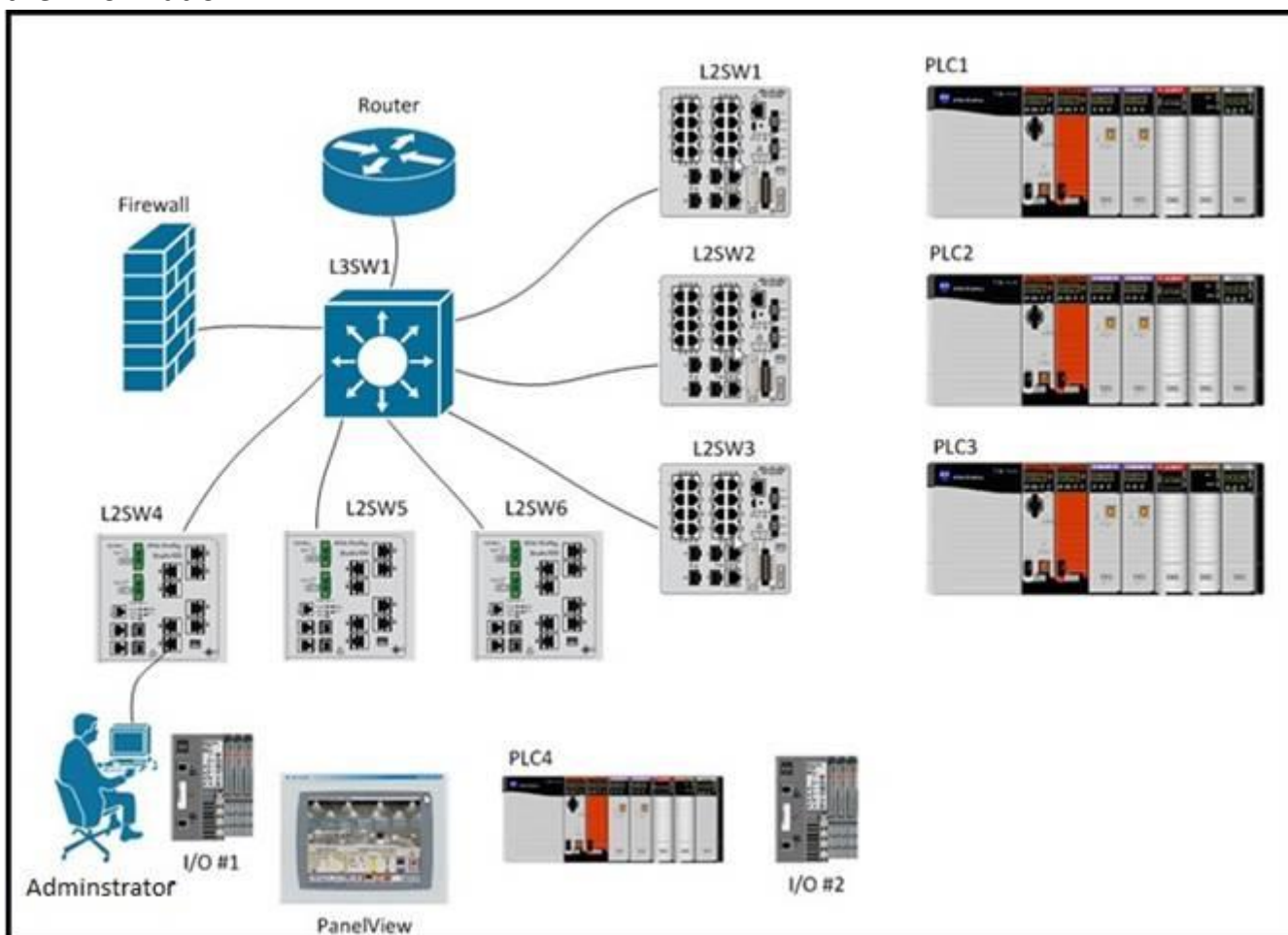
A small manufacturing company has a Class C network address on the plant floor and needs to create five subnets, each accommodating 25 endpoints. Which subnet mask needs to be configured?

- A. 255.255.240.0
- B. 255.255.255.128
- C. 255.255.255.192
- D. 255.255.255.224
- E. 255.255.255.240
- F. 255.255.255.248

Answer: D

#### QUESTION 3

Refer to exhibit. The administrator has configured the following device IP settings, but did not keep track of which ports the devices were connected to. The administrator is able to ping each device but needs to update the network documentation to include the switch and interface where each device is connected. The administrator does not want to walk to each device and switch to track down the information.



Which steps below would you execute in sequence to document the switch and interface where each device is connected?

1. View the ARP table on L3SW1
  2. View the ARP table on the administrator's station
  3. View the ARP table on L2SW4
  4. PING all the devices
  5. View the MAC address table on all switches
  6. View the MAC address table on the administrator's station
- A. 2,4,5
  - B. 2,5,4
  - C. 4,3,6
  - D. 4,1,5

Answer: D

#### QUESTION 4

Which is an issue with running CIP Motion on a REP network and identifies an alternate resiliency protocol that works for CIP Motion?

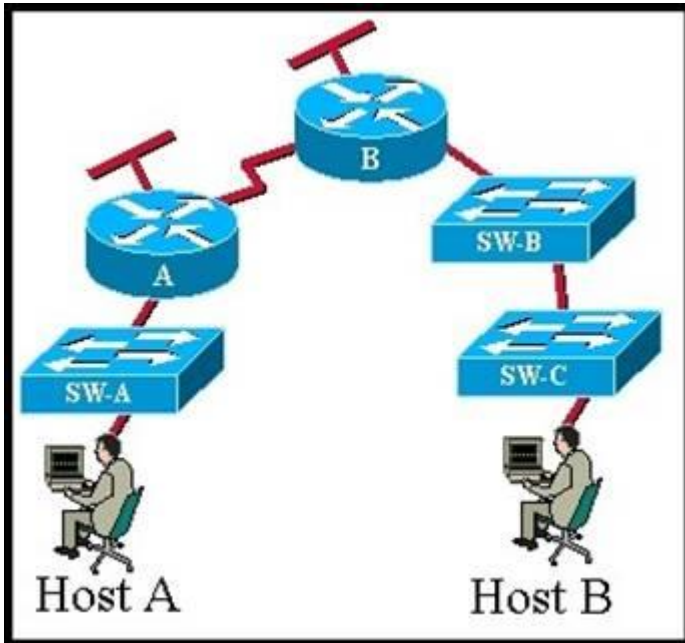


- A. CIP Motion requires a star topology which is not supported by RE
- B. DLR is a suitable resiliency protocol for CIP motion.
- C. REP convergence is not fast enough
- D. DLR is a suitable resiliency protocol for CIP motion.
- E. CIP Motion requires a star topology which is not supported by RE
- F. RPVST+ is a suitable resiliency protocol for CIP motion.
- G. REP convergence is not fast enough
- H. RPVST+ is a suitable resiliency protocol for CIP motion.

Answer: B

#### QUESTION 5

Exhibit:



Refer to the exhibit. CCNA.com has the industrial network shown in the exhibit. All switches are configured as layer 2 switches and are using VLAN 1 as their management VLAN. Each VLAN 1 interface has been assigned the correct IP address. What is the purpose of assigning a default gateway to SW-C switch?

- A. allows connectivity between the VLAN 1 interface on SW-C and other devices in the network.
- B. allows connectivity between Host A and other devices in the network.
- C. allows connectivity between Host B and other devices in the network.
- D. allows the switch to pass traffic between Host A and Host B

Answer: A

## Full Access

<https://certificationtime.com/updated/200-601-exam-dumps-pdf/>