



Welcome to download the Newest CertificationsTime 010-151 dumps

<https://certificationstime.com/updated/010-151-exam-dumps-pdf/>


## Exam Questions 010-151

# DCTECH Supporting Cisco Data Center System Devices

<https://certificationstime.com/>

**Questions & Answers  
PDF**

- Latest Exam Questions
- Verified Answers
- 99% Success Rate
- Free 90 Days Update
- Instant Access

 PDF

 **CERTIFICATIONSTIME**



### NEW QUESTION 1

How do you find the serial number of a Cisco UCS 5108 Blade Server chassis?

- A. Use the Cisco UCS Admi
- B. Use the Cisco UCS Applicatio
- C. Use the Cisco UCS Assistan
- D. Use the Cisco UCS Manage

Answer: D

### NEW QUESTION 2

What does the system status LED look like when an over temperature or major alarm occurs on the Cisco UCS 6120XP Fabric Interconnect?

- A. Amber
- B. Red
- C. Blinking amber
- D. Blinking red

Answer: C

### NEW QUESTION 3

Which processor option is supported in the Cisco UCS C420 M3 Server?

- A. up to two Intel Xeon E5-4600 series multicore processors
- B. up to two Intel Xeon E7-4800 series multicore processors
- C. up to four Intel Xeon E5-4600 series multicore processors
- D. two or four Intel Xeon E7-8800 series multicore processors

Answer: C

### NEW QUESTION 4

Refer to the exhibit.



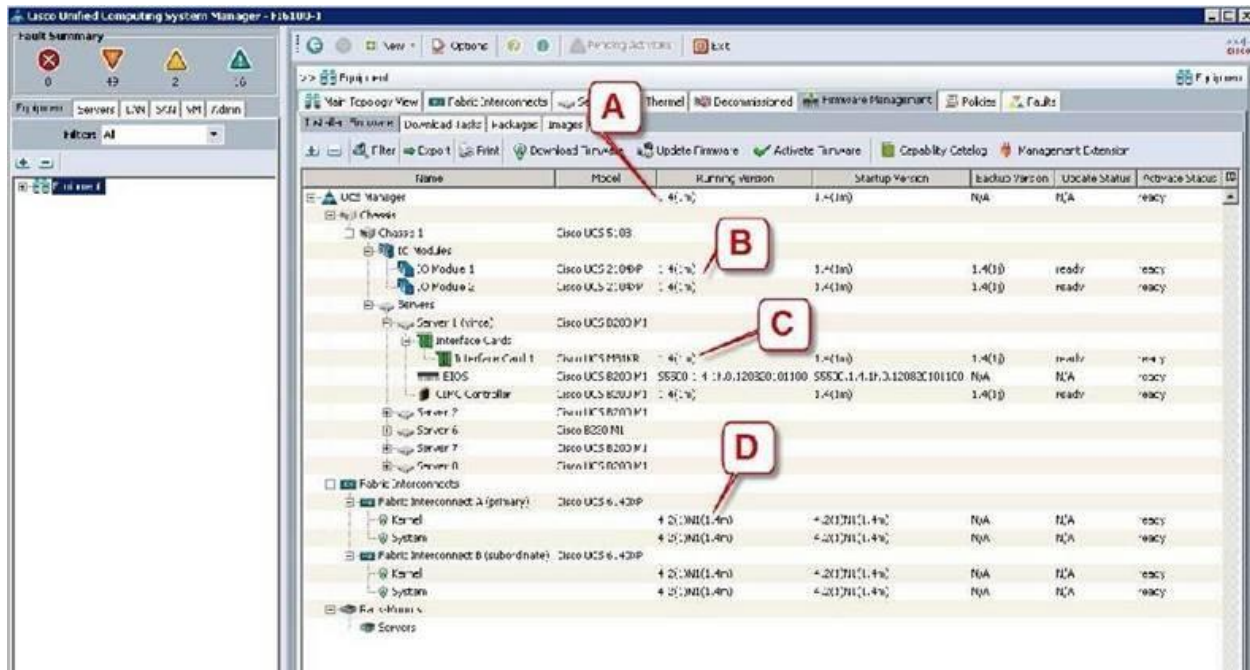
Which Cisco MDS chassis supports the 48-Port 16-Gbps Fibre Channel Switching Module?

- A. MDS 9509
- B. MDS 9513
- C. MDS 9710
- D. MDS 9506

Answer: C

### NEW QUESTION 5

Refer to the exhibit.





Which call-out accurately shows the current running version of the Cisco UCS Manager management software?

- A. A - UCS Manager running version 1.4(1m)
- B. B - IO Module 1 running version 1.4(1m)
- C. C - Interface Card 1 running version 1.4(1m)
- D. D - Kernel running version 4.2(1)N(1.4m)

Answer: A

### NEW QUESTION 6

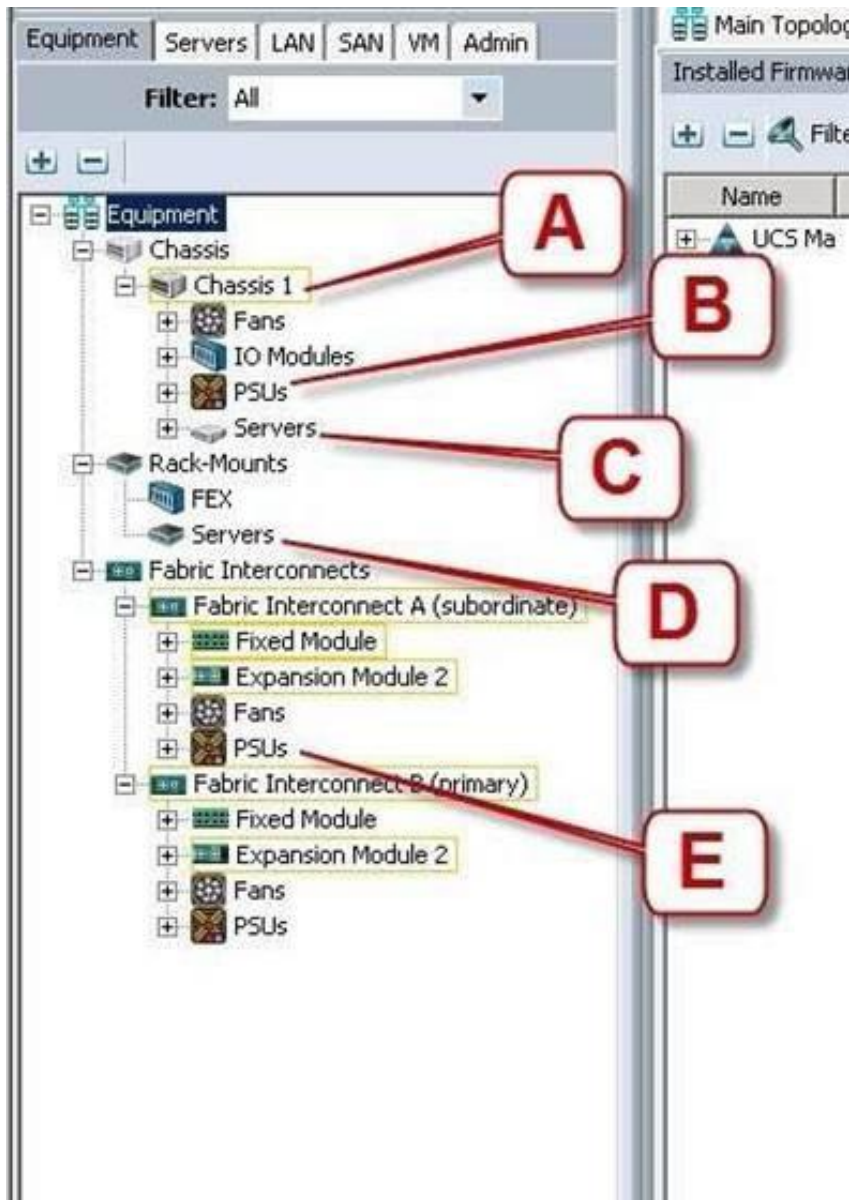
Which command-line interface mode is best described by this prompt? UCS-switch-A (nxos)#

- A. maintenance mode
- B. EXEC mode
- C. local management mode
- D. global configuration mode
- E. Cisco IOS mode

Answer: B

### NEW QUESTION 7

Refer to the exhibit.



Where is the best place to see the power supply status of the blade server enclosure?

- A. A - Chassis 1
- B. B - Chassis 1 - PSUs
- C. C - Chassis1 - Servers
- D. D - Rack-Mounts - Servers
- E. E - Fabric Interconnects A - PSUs

Answer: B



### NEW QUESTION 8

Which Cisco NX-OS command displays kernel uptime?

- A. show module
- B. show version
- C. show license
- D. show boot
- E. show interface

Answer: B

### NEW QUESTION 9

Which three components are hot swappable in a Cisco UCS Blade Server and Chassis? (Choose three.)

- A. Fabric Extender
- B. Power supply
- C. Heat sink
- D. SAS Hard Drive
- E. 2x8GB Kit DIMMs
- F. Mezzanine card

Answer: ABD

### NEW QUESTION 10

After installation or replacement of a Cisco UCS C-Series Rack-Mount Server, the host does not boot. Which four options should be verified? (Choose four.)

- A. Verify the power source to the equipment
- B. Check for loose HDD cable
- C. Reseat the DIMMs, CPU, and PCI card
- D. Verify that power supplies are receiving power
- E. Reseat the mezzanine card connectors



Welcome to download the Newest CertificationsTime 010-151 dumps

<https://certificationstime.com/updated/010-151-exam-dumps-pdf/>

- F. Check the CPU sockets for bent pin
- G. Check the Cisco IMC for fan fault

Answer: ACDF

**For the Full Access Visit:**

<https://certificationstime.com/updated/010-151-exam-dumps-pdf/>